



Project Name : NIRALA DIADEM
Project Registration No. : UPRERAPRJ825497/11/2025
Project Launch Date : 17-11-2025
Account Name : PBPL COLL ACC FOR NIRALA DIADEM
Bank Name : Yes Bank Ltd. A/C No: 001464500000010
Branch : Basement, Ground Floor & 1st Floor, Plot No. 38,
Block H1A, Sec 63, Noida - 201301
IFSC Code : YESB00000014
Promoter Name : Parth Builtech Private Limited
Promoter Id: (UPRERAPRM348231)
Website : <https://www.up-rera.in>

Corp Office: 21, Ground Floor, Logix Infotech Park, D-5, Sec-59, Noida, 201301
Tel: 0120-4823000 | Email: sales@niralaworld.com

Site Office: C-06, Sector 10, Greater Noida West (U.P.)
www.niralaworld.com

Regd. Office: G-83/207, Vijay Chowk, Laxmi Nagar, Delhi – 110092
Tel: 0120-4823000 | Email: parth@niralaworld.com

Parth Builtech Private Limited
(A Nirala World Group Company)
An ISO Certified Company
ISO 14001:2015 | ISO 14001:2015 | ISO 45001:2018

CIN: U45400DL2008PTC184278 | For sales : 83520 86520

The advertisement is merely for general information purposes and contains proprietary information regarding the Promoter Company, and does not constitute any offer or invitation for offer to sell. No part of the information shall be circulated, shared, modified, stored, or archived without the consent of the Promoter Company, which consent can be withdrawn at any time by the Promoter Company. The reader/visitor of the page/advertisement accepts and agrees to be bound by the legal terms of use. The information and contents herein, including all designs, layouts, specifications, dimensions, locations, services, images, landscape, facilities, amenities & infrastructure etc. are merely indicative and illustrative of the envisaged development; and not to scale, the same is subject to revision by the Promoter as may be required and approved by the Competent Authorities. All images are purely artistic conceptualization/stock images and not a legal offering. All areas and figures are indicative and the units mentioned herein are subject to availability. The Recipients/viewers are advised to exercise their discretion in relying on the information shown/provided and are requested to verify all the details, including area, amenities, services, terms of sales and payments and other relevant terms independently with the Promoter Company and take appropriate independent advice prior to concluding any decision for buying any Unit(s) in the Project. Disputes with regard to the interpretation of information will be subject to the exclusive jurisdiction of the District Courts at Noida, U.P., and the Hon'ble High Court of Allahabad, Uttar Pradesh, India. For the purpose of this Project, 1 hectare, = 2.471 Acres, 1 Acre = 4840 sq.yds. or 4046.864 sq. mtrs., 1 sq mtr. = 10.764 sq. ft.



NIRALA DIADEM

by NIRALA WORLD

*Rendered image



Transforming promises into reality

29 Years of Enduring Commitment

6000+ Happy Families

1,00,00,000 Sq. Ft. Delivered

Since inception in 1996, **Nirala World** has created new benchmarks in the domain of real estate and has earned a leading name in the constellation of elite developers.

Led by a dynamic team of experienced professionals, the company aims at fulfilling the aspirations of the emerging India for modern spaces. Development luxurious residential apartments with affordable pricing being the main expertise of the company, **Nirala World** has successfully delivered many residential & commercial projects in nearly 3 decades of its successful journey.



CROWNING
THE
FUTURE
OF COMMERCE

*Rendered image



A CROWN OF
PREMIUM
SMART LIVING



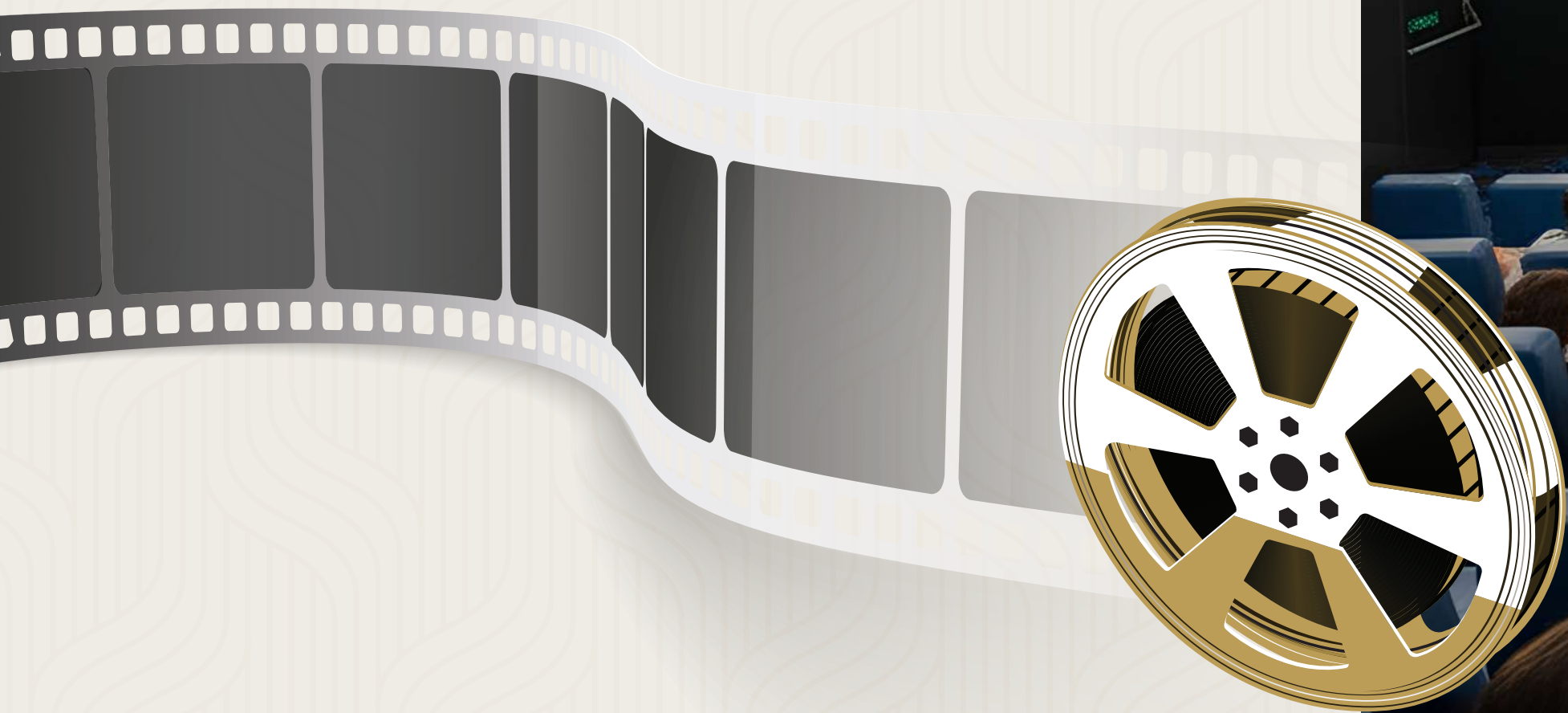
*Stock image



A CROWN ADDRESS FOR LUXURY BRANDS



A CROWN OF LEISURE
WITH GRANDEUR



*Stock image

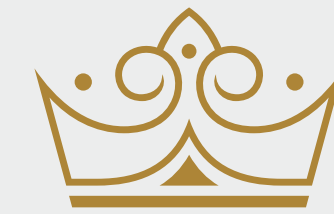
Be a Part of Crowning the Luxury Commercial Retail in Greater Noida West



*Rendered image



Presenting



NIRALA DIADEM
by NIRALA WORLD

The Sovereign Crown of Commercial Retail

A Retail, Leisure And Living Destination Where it All Comes Together.

Nirala Diadem epitomizes an architectural magnum opus in the commercial landscape of Sector 10, Greater Noida West. Conceptualized and developed by the illustrious Nirala World, this avant-garde establishment amalgamates retail showrooms, studio apartments, and multiplexes within a meticulously curated ecosystem of sophistication and utility.



-  Premium Retail Stores
-  A Grand Multiplex Cinema
-  Contemporary Studio Apartments
-  Fine Dine Restaurants
-  A Landmark Investment Opportunity
-  Ample Parking Space
-  Family Entertainment & Leisure Zone
-  3 Side Open Plot (130 meter front facing)

*Rendered image



Premium Retail Stores

Step into an iconic retail boulevard designed to attract unmatched visibility & assured footfalls. With expansive frontages and strategic placement, these retail spaces attract continuous footfall, drive commercial growth, and ensure exceptional returns.



The *Epicenter* of Commerce



F&B Spaces

Fine dining options creating a dynamic culinary hub. Strategically curated to cultivate dynamic patronage and redefine the epicurean experience.



The *Symphony* of fine dining

Multiplex Cinema

Anchoring the development is a grand multiplex arena. By orchestrating ceaseless activity and social gravitas, the multiplex augments the value, visibility, and vitality.

The *Axis of Leisure* & Engagement



*Stock image



Studio Apartments

Perfectly designed for modern professionals and forward-thinking investors. These residences are both habitable sanctuaries and lucrative assets.



Smart *Living. Smart* Investment

Catchment Area Residents

Nirala Daidem enjoys a prime location in Sector 10, surrounded by a rapidly growing residential hub. With over 100+ operational and upcoming societies in a 3–5 km radius, the project is set to benefit from a strong and steady footfall.

Why It’s a Game-Changer:

Upcoming branded realty in sector-10 discover premium projects setting new benchmarks in luxury and modern living. The area is witnessing high demand for retail, F&B, multiplex, office spaces, and daily convenience services, making it a thriving hub for both residents and businesses.

RESIDENTS

PRESENT

Within 3 KM Radius: 1.35+ Lakh residents
Within 8 KM Radius: 5.00+ Lakh residents
Within 15 KM Radius: 7.00+ Lakh resident

NEAR FUTURE

Within 3 KM Radius: 3.35+ Lakh residents
Within 8 KM Radius: 15+ Lakh residents
Within 15 KM Radius: 23+ Lakh resident



Connectivity Landmark

FNG Expressway : 10 MIN

Delhi-Meerut Expressway : 20 MIN

Greater Noida Expressway : 24 MIN

Yamuna Expressway : 22 MIN

Upcoming Metro Station : Walking Distance

Jewar Airport (Upcoming) : 30-35 MIN



NIRALA DIADEM
by NIRALA WORLD

LOCATION THAT OFFERS EVERYTHING

CORPORATE

KEY LANDMARKS DISTANCE (KM)

Yotta Data Center Park	2.4
Artha SEZ	7.3
Wipro Knowledge Park	13.3
Technopolis IT Park – Sec 62	16.2
Skymark One	17.5
Adobe Office	17.7
Oxygen Business Park	19
Advant Navis Business Park	20

EDUCATION

KEY LANDMARKS DISTANCE (KM)

Sharda University	2.4
Jaypee Institute Of Information Technology	7.3
Galgotia University	13.3
BIMTECH, Gr. Noida	16.2
Benett University, Gr. Noida	17.5
Amity University, Gr. Noida	17.7
AAFT (Film City)	19
Gautam Buddha University	20

NEARBY RESIDENTS

KEY LANDMARKS

Amaatras Homes
Sikka Kaamya Greens
Coco County
ATS HomeKraft Happy Trails
Ashtech Industries
Godrej Majesty
SKA Green Mansion
Civitech Strings
Eldeco La Vida Bella
VVIP Addresses





space for pocket size